

THIS THERMOSTAT IS SUITABLE FOR WATER HEATING, ELECTRIC HEATING AND GAS BOILER

01

Welcome

Thank you for your trust and support. By adopting higher-end technology and more perfect technology, your new thermostat will provide you with the right temperature environment every day in the future, making your life more comfortable and your living environment more stylish and beautiful. For detailed instructions on the installation and use of this thermostat, please read this manual carefully. Please contact a professional to install the thermostat for you and install and use the product to the extent permitted by law

Application

Intelligent digital temperature controller is a floor heating system suitable for room temperature control and household temperature control. It controls the operating state of the floor heating equipment by comparing the ambient temperature with the set temperature, which improves comfort and achieves energy saving. This digital temperature controller adopts microcomputer control technology and is equipped with full-screen display touch buttons, which is elegant in design and easy to use. The thermostat has manual automatic, programmable and state memory functions.

Product packaging

- Thermostat host----- 1 PC
- Manual----- 1 PC
- Qualification certificate----- 1PC
- Screw----- 2 PCS
- Sensing line (optional)----- 1 PC

Product Model

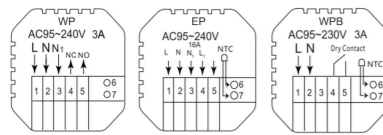
- WP Plumbing 3A
- EP Electric Heating 16A
- WPB linkage, gas boiler 3A

02

User Notes

1. Please read this manual carefully. Improper operation may damage the product or cause dangerous conditions.
 2. The installation personnel must be well-trained and experienced service technicians.
 3. After installation, please read this manual carefully and operate the product according to the instructions.
- Caution: Risk of electric shock or equipment damage.

Wiring Diagram

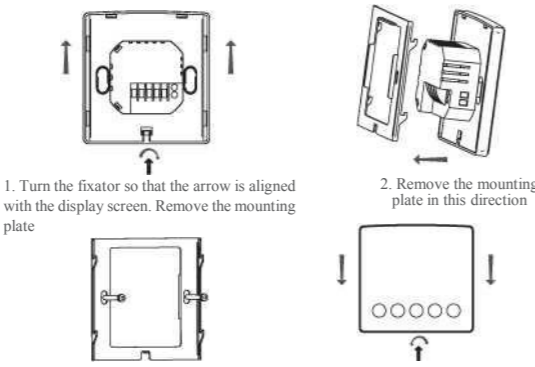


Note: WP for water heating; EP for electric heating; WPB for gas boiler

03

Installation procedure

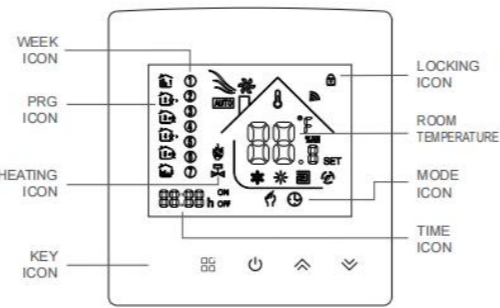
This product is installed with a standard 86 control switch (in compliance with European regulations)



1. Turn the fixator so that the arrow is aligned with the display screen. Remove the mounting plate
2. Remove the mounting plate in this direction
3. Fix the mounting plate on the cassette with a screw
4. Insert the thermostat into the mounting plate from top to bottom and reuse. The screwdriver will rotate the fixator 180 degrees to complete the installation

04

Description of display & Icon



05

Operating Instruction

1. Power on/off: press to turn on/off the thermostat.
2. Press the key to switch between manual and automatic modes.
3. In the automatic mode, press or to adjust the temperature to enter the automatic temporary mode. This mode runs for only one session.
4. Long press key and key to enter the clock setting, press key to switch Settings Item, press and keys to adjust the value of each parameter. Note: the time of WIFI model will be Automatically gets Internet time
5. Press and for 5 seconds to add or cancel the child lock.
6. WIFI link: When the thermostat is on, long press button for 5 seconds and the thermostat display will come out Now the WIFI icon flashes, at this time the thermostat into the state of code.

06

Time programming instructions

Press and hold the key to enter the programming setting, short press the key to switch the option, press the key or key to adjust each option parameter, and press the key to exit and save.

KEY	OPTION	ICON	TIME	ADJUST	DEFAULT	ADJUST
	workday		06:00		20°C	
			08:00		15°C	
			11:30		15°C	
			12:30		15°C	
			17:00		22°C	
			22:00		15°C	
	Holiday		08:00		22°C	
			23:00		15°C	

07

Advanced options

When POWER OFF, press the key and the key for 5 seconds to enter the advanced option setting. Press to enter the next option, press and to adjust, and press to exit the height Level option.

1	Temperature compensation	The default value of the calibration room temperature is 2 °C. Press the up and down keys to adjust. The adjustable range is 9.9° C to -9.9 °C.
2	Sensor selection	The temperature sensor is selected as IN by default. Press the up and down keys to adjust as IN respectively, indicating that the internal.
3	Modify the temperature limit	The default temperature limit value is 35°C. Press the up and down keys to adjust the range from 5 °C to 60 °C.
4	Temperature difference start	The default temperature difference is set to 1 °C. Press the up and down keys to adjust the range to 1-10 degrees.
5	Anti-freeze function	Set the default anti-freeze function to OFF, display OFF, press the up key to turn on anti-freeze and display ON
6	Holiday option and turn off weekly programming	Set the default rest day as double OFF. Press the up and down keys to adjust it to double OFF (1-5), single OFF (1-6), no OFF (1-7) and turn off week programming (OFF).
7	Primary and secondary reverse selection	Set the default main and auxiliary reversal to 0. Press the up and down keys to adjust 0 to turn off the main and auxiliary reversal. 01 means auxiliary reverse, 02 means auxiliary reverse, 03 means main and auxiliary reverse, shutdown and antifreeze is not an state option
8	Passive linkage output delay time	Set the default passive linkage delay time to 0. Press the up and down keys to adjust the range of 0-5 minutes.
9	Set upper temperature limit	The default value of the set temperature upper limit is 60°C, and the adjustment range is 15-95°C by pressing the up and down keys.
10	Restore Factory Defaults	Set to restore the factory default setting to displayPress the up button to adjust the displaypress the enter button to restore the factory settings

08

About WIFI connection

Before using the WIFI thermostat for the first time, you should set the WIFI signal and configuration through your smart phone or tablet to allow communication between your connected devices.

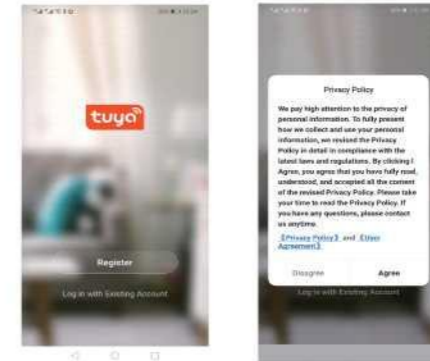
WIFI link: When the thermostat is on, long press button for 5 seconds and the thermostat display will come out Now the WIFI icon flashes, at this time the thermostat into the state of code.

1. Download the APP Search for "Tuya" in App market or scan below QR Code to download



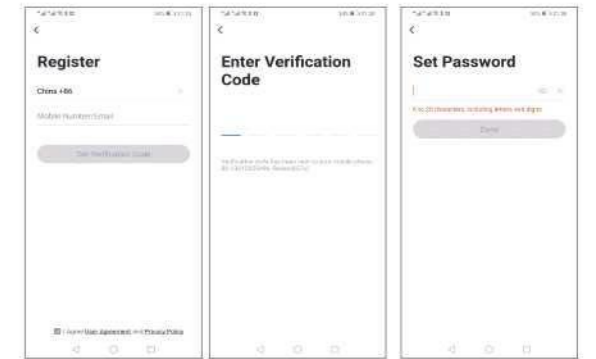
09

- 2.Register Account If you don't have an APP account yet, you can choose to register or log in via SMS verification code. Click "Create a new account", you will enter the Tuya Smart Platform Privacy Policy page. After you click Agree, you will officially enter the mobile phone registration page.



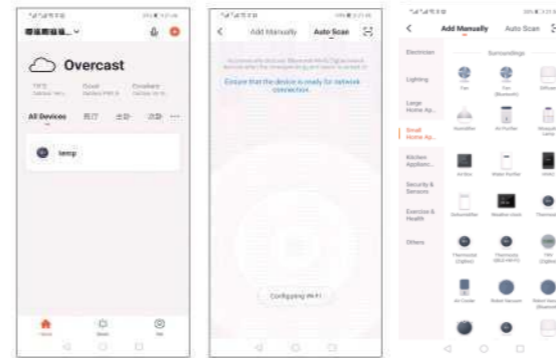
10

The system automatically determines the current country/region. You can also select the country/region manually. After entering your mobile phone number or email address, click "get verification code". Enter the received verification code, then enter the password, and click "finish" to register successfully.



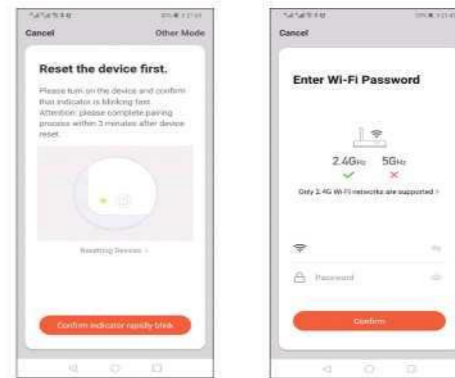
11

3. Add device Click "add device" or "+" on the top right of the APP homepage to enter the "add device" page. Currently, there are two ways to manually add device and search device.



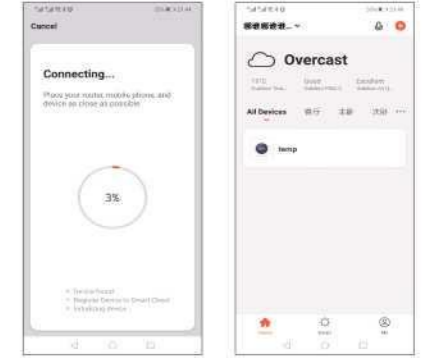
12

Find the thermostat product (WIFI model) in the device list. In the specified network mode, the indicator flashes (slowly flashes) and then click the confirm button on the page. Select the device's work area to connect to the WIFI of the Internet and enter the WIFI password. Click "ok" to enter the matching network process.



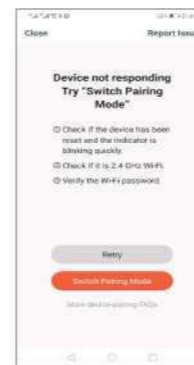
13

If the default mode distribution network is selected, the distribution process APP is shown in figure 1 below, and the distribution network successfully displays the interface shown in figure 2. The name of the device can be changed or the location of the room can be selected.



14

If the distribution network fails, the APP will display the page shown in the figure below. You can choose to add or view the help again. Note: if the connection fails, please confirm whether the temperature control device has entered the code matching state, refer to item 6 of the operation manual.



15

4. Display of temperature controller APP interface



16